

new to range

SPEED TO MARKET SECOND TO NONE

AYD[®]

AUTOMOTIVE INDUSTRY



PASSENGER VEHICLE



www.aydtr.com



APRIL 2022

new to range

PASSENGER VEHICLE

INDEX

APRIL 2022

ACURA	3-4
BMW	5-7
CADILLAC	8-9
CHEVROLET	10-13
DODGE	14-16
FORD	17-19
FORD USA	20-21
GMC	22-23
HYUNDAI	24-25
INFINITI	26
JEEP	27
LINCOLN	28
MAZDA	29
NISSAN	30-34
RENAULT	35
SKODA	36
TESLA	37
VOLKSWAGEN	38

ACURA



MODEL	START YEAR	END YEAR
RL	1995/10	2004/09

TRACK CONTROL ARM *ROTILLI KOL*

LEFT
Upper Rear Axle



OE:
52400SZ3003


94-21185

RIGHT
Upper Rear Axle



OE:
52390SZ3003

94-21186

RELATED	PART NUM	DESCRIPTION
	21187	SILENTBLOCK

RELATED	PART NUM	DESCRIPTION
	21187	SILENTBLOCK

ACURA

MODEL	START YEAR	END YEAR
RL	1995/10	2004/09



SILENTBLOCK *TAKOZ*

LEFT & RIGHT
UPPER REAR Axle



OE:
52400SZ3003-P52390SZ3003-P

87-21187

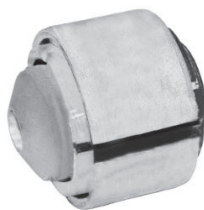
BMW

MODEL	START YEAR	END YEAR
i8 (I12)	2014/03	2020/06



SILENTBLOCK *TAKOZ*

LEFT & RIGHT
REAR Axle



OE:
33326862215-P1
33326862216-P1

87-17687

BMW

MODEL	START YEAR	END YEAR
X6 (G06, F96)	2019/08	



BUSH TAKOZ

LEFT & RIGHT
UPPER FRONT Axle



OE:
31106889154-P

87-26553

BMW

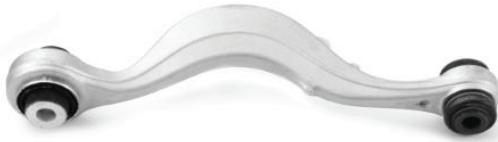


MODEL	START YEAR	END YEAR
5 Touring (G31)	2017/03	
5 Touring Van (G31)	2017/03	
6 Gran Turismo (G32)	2017/06	

STRUT CONTROL ARM *DENGE KOLU*

LEFT
UPPER Rear Axle

RIGHT
UPPER Rear Axle





OE:
33326861119

OE:
33326861120

88-26900

88-26901

RELATED	PART NUM	DESCRIPTION
	18798	SILENTBLOCK

RELATED	PART NUM	DESCRIPTION
	18798	SILENTBLOCK

CADILLAC



MODEL	START YEAR	END YEAR
CTS	2013/09	
CTS Coupe	2013/09	
CTS Sport Wagon	2013/09	

TRACK CONTROL ARM *ROTILLI KOL*

LEFT

LOWER Front Axle
AWD



OE:
23462014

94-24657


RIGHT


LOWER Front Axle
AWD



OE:
23462015

94-24658

RELATED	PART NUM	DESCRIPTION
	22445	SILENTBLOCK

RELATED	PART NUM	DESCRIPTION
	22445	SILENTBLOCK

CADILLAC



MODEL	START YEAR	END YEAR
CTS	2013/09	
CTS Coupe	2013/09	
CTS Sport Wagon	2013/09	

TRACK CONTROL ARM *ROTILLI KOL*

LEFT
LOWER Front Axle



OE:
84518604


94-25836


RIGHT
LOWER Front Axle



OE:
84518606

94-25837

RELATED	PART NUM	DESCRIPTION
	22445	SILENTBLOCK

RELATED	PART NUM	DESCRIPTION
	22445	SILENTBLOCK

CHEVROLET

MODEL	START YEAR	END YEAR
ASTRO Extended Cargo Van	1994/09	2005/12
ASTRO Extended Passenger Van	1994/09	2005/12
ASTRO Minibus/Bus	1994/10	2005/05
ASTRO Panelvan/Van	1994/10	2005/05
ASTRO Standard Cargo Van	1994/09	2005/12



SILENTBLOCK *TAKOZ*

LEFT & RIGHT
LOWER FRONT Axle



OE:
15969294-P1

87-26361

CHEVROLET

MODEL	START YEAR	END YEAR
ASTRO Extended Cargo Van	1994/09	2005/12
ASTRO Extended Passenger Van	1994/09	2005/12
ASTRO Minibus/Bus	1994/10	2005/05
ASTRO Panelvan/Van	1994/10	2005/05
ASTRO Standard Cargo Van	1994/09	2005/12



SILENTBLOCK *TAKOZ*

LEFT & RIGHT
LOWER FRONT Axle



OE:
15969294-P

87-26362

CHEVROLET

MODEL	START YEAR	END YEAR
COLORADO	2003/04	



BALL JOINT *ROTIL*

LEFT & RIGHT
LOWER FRONT Axle



OE:
15104114-P2
15104113-P2

92-26869

CHEVROLET



MODEL	START YEAR	END YEAR
K1500 Extended Cab Pickup	1987/09	1999/12
K1500 SUBURBAN SUV	1991/09	1999/12
K2500 Extended Cab Pickup	1987/09	2000/12
K2500 Standard Cab Pickup	1987/09	2000/12
K2500 SUBURBAN SUV	1991/09	1999/12
K3500 Cab & Chassis	1987/09	2000/12
K3500 Crew Cab Pickup	1987/09	2000/12
K3500 Extended Cab Pickup	1987/09	2000/12
K3500 Standard Cab Pickup	1987/09	2000/12
V1500 SUBURBAN SUV	1986/09	1991/12

STABILIZER *STABILIZER ROT*

LEFT & RIGHT
REAR Axle



OE:
15671589

96-26898

DODGE



MODEL	START YEAR	END YEAR
DAKOTA Crew Cab Pickup	1996/09	2004/12
DAKOTA Extended Cab Pickup	1996/09	2004/12
DAKOTA Standard Cab Pickup	1996/09	2004/12

WISHBONE SALINCAK

LEFT
UPPER Front Axle



OE:
52106161AC
52106161AD
52106161AE



97-18597



RIGHT
UPPER Front Axle



OE:
52106160AC
52106160AD
52106160AE

97-18598

RELATED	PART NUM	DESCRIPTION
	06256	BALL JOINT
	24111	BUSH

RELATED	PART NUM	DESCRIPTION
	06256	BALL JOINT
	24111	BUSH

DODGE

MODEL	START YEAR	END YEAR
DAKOTA Crew Cab Pickup	1996/09	2004/12
DAKOTA Extended Cab Pickup	1996/09	2004/12
DAKOTA Standard Cab Pickup	1996/09	2004/12



BUSH TAKOZ

LEFT & RIGHT
UPPER Front Axle



OE:
52037673
5166385AA-P1

87-24111

DODGE

MODEL	START YEAR	END YEAR
RAM 2500 Extended Cab Pickup	1993/09	2001/12
RAM 3500 Extended Cab Pickup	1992/09	2002/12




REPAIR KIT *TAKIM (SET)*

LEFT & RIGHT
FRONT Axle



OE:
5015114AA

89-26880

RELATED	PART NUM	DESCRIPTION
	02214	BALL JOINT
	06457	BALL JOINT

FORD

MODEL	START YEAR	END YEAR
RANGER (ER, EQ, R_)	1997/04	2011/12
RANGER (ET)	2005/01	2012/07



SILENTBLOCK *TAKOZ*

LEFT & RIGHT
LOWER FRONT Axle



OE:
6L5Z3078AA-P

87-26230

FORD

MODEL	START YEAR	END YEAR
KUGA III (DFK)	2019/07	



STABILIZER Z ROT (STABILIZER KOL)

LEFT & RIGHT
FRONT Axle



OE:
LX613B438AEA
2451509

96-26363

FORD



MODEL	START YEAR	END YEAR
GALAXY II (WA6)	2006/05	2015/06
GALAXY III (CK)	2015/01	
MONDEO IV (BA7)	2007/03	2015/01
MONDEO IV Sedan (BA7)	2007/03	2015/01
MONDEO IV Turnier (BA7)	2007/03	2015/01
MONDEO IV Van	2007/03	2015/01
S-MAX (WA6)	2006/05	2014/12

SILENTBLOCK TAKOZ

LEFT & RIGHT
LOWER REAR Axle



OE:
6G915K652XAE-P1

87-26484

FORD USA

MODEL	START YEAR	END YEAR
RANGER Cab & Chassis	1997/09	2012/12
RANGER Crew Cab Pickup (ES)	1997/09	2012/12
RANGER Extended Cab Pickup (ES)	1997/09	2012/12
RANGER Standard Cab Pickup	1997/09	2012/12
RANGER Stripped Chassis	1997/09	2012/12



SILENTBLOCK *TAKOZ*

LEFT & RIGHT
LOWER FRONT Axle



OE:
6L5Z3078AA-P

87-26230

FORD USA



MODEL	START YEAR	END YEAR
EXPEDITION	1996/08	2002/09
F-150	1996/10	
F-250	1996/10	2003/12

TIE ROD END *ROT BAŐI*

LEFT
FRONT Axle



OE:
2L3Z3A131AA

91-26870

RIGHT
FRONT Axle



OE:
2L3Z3A130CA

91-26871

GMC

MODEL	START YEAR	END YEAR
CANYON Cab & Chassis	2003/09	2012/12



BALL JOINT *ROTIL*

LEFT & RIGHT
LOWER FRONT Axle



OE:
15104113-P2
15104114-P2

92-26869

GMC



MODEL	START YEAR	END YEAR
C1500 SUBURBAN SUV	1991/09	1999/12
K1500 SUBURBAN SUV	1991/09	2000/12
K2500 Extended Cab Pickup	1987/09	2000/12
K2500 Standard Cab Pickup	1987/09	2000/12
K2500 SUBURBAN SUV	1991/09	1999/12
K3500 Cab & Chassis	1987/09	2000/12
V3500 Standard Cab Pickup	1986/09	1991/12

STABILIZER *STABILIZER ROT*

LEFT & RIGHT
REAR Axle



OE:
15671589

96-26898

HYUNDAI

MODEL	START YEAR	END YEAR
TERRACAN (HP)	2001/06	2008/03



PITMAN ARM *PITMAN KOLU*

CENTER
Front Axle



OE:
56820H1002

70-19680

HYUNDAI

MODEL	START YEAR	END YEAR
i20 III (BC3, BI3)	2020/08	



AXIAL JOINT *ROT MILI*

LEFT & RIGHT
FRONT Axle



OE:
56540CO000

95-26896

INFINITI

MODEL	START YEAR	END YEAR
G Coupe	2002/09	2007/12



BALL JOINT *ROTIL*

LEFT & RIGHT
LOWER FRONT Axle



OE:
40015AL55J-P
40014AL55J-P

92-26787

JEEP

MODEL	START YEAR	END YEAR
COMPASS (MP, M6)	2016/01	



STABILIZER *STABILIZER ROT*

LEFT & RIGHT
Front Axle



OE:
68273965AC
68273965AB
68498192AA

96-26892

LINCOLN

MODEL	START YEAR	END YEAR
NAVIGATOR (UN173)	1997/05	2002/12



TIE ROD END *ROT BAŞI*

LEFT
FRONT Axle



OE:
2L3Z3A131AA

91-26870

RIGHT
FRONT Axle



OE:
2L3Z3A130CA

91-26871

MAZDA

MODEL	START YEAR	END YEAR
CX-5 (KE, GH)	2011/11	2017/02



AXIAL JOINT *ROT MILI*

LEFT & RIGHT
FRONT Axle



OE:
KD3132240B

95-26893

NISSAN

MODEL	START YEAR	END YEAR
NAVARA Platform (D23)	2015/01	



WISHBONE *SALINCAK*

LEFT
Lower Front Axle



OE:
455014KH4A
4520282Z01
4520282Z10

97-16426

RIGHT
Lower Front Axle



OE:
54500EA000
54500EA00A
545004KH4A

97-16427

RELATED	PART NUM	DESCRIPTION
	16428	BALL JOINT
	16429	SILENTBLOCK
	22630	SILENTBLOCK

RELATED	PART NUM	DESCRIPTION
	16428	BALL JOINT
	16429	SILENTBLOCK
	22630	SILENTBLOCK

NISSAN

MODEL	START YEAR	END YEAR
ALTIMA (L33)	2012/05	



ANTI-ROLL BAR BUSHING *DENGE MIL BURCU*

LEFT & RIGHT
Front Axle



OE:
546133TA1B

72-25847

NISSAN

MODEL	START YEAR	END YEAR
350Z Roadster (Z33)	2002/09	2009/12



BALL JOINT *ROTIL*

LEFT & RIGHT
LOWER FRONT Axle



OE:
40015AL55J-P
40014AL55J-P

92-26787

NISSAN

MODEL	START YEAR	END YEAR
PATROL VI (Y62)	2010/04	



AXIAL JOINT *ROT MILI*

LEFT & RIGHT
FRONT Axle



OE:
D85211LB0A

95-26897

NISSAN



MODEL	START YEAR	END YEAR
PRIMERA (P12)	2002/01	
PRIMERA Hatchback (P12)	2002/01	
PRIMERA Station wagon (WP12)	2002/01	

AXIAL JOINT *ROT MILI*

LEFT & RIGHT
FRONT Axle



OE:
48521AU000
48521AU026
48521AU085

95-26902

RENAULT

MODEL	START YEAR	END YEAR
ALASKAN	2016/10	



WISHBONE *SALINCAK*

LEFT
Lower Front Axle



OE:
545014KH1A

97-16426


RIGHT
Lower Front Axle



OE:
545004KH1A

97-16427

RELATED	PART NUM	DESCRIPTION
	16428	BALL JOINT
	16429	SILENTBLOCK
	22630	SILENTBLOCK

RELATED	PART NUM	DESCRIPTION
	16428	BALL JOINT
	16429	SILENTBLOCK
	22630	SILENTBLOCK

SKODA

MODEL	START YEAR	END YEAR
ENYAQ iV SUV (5AC, 5AZ)	2020/10	



SILENTBLOCK *TAKOZ*

LEFT & RIGHT
LOWER REAR Axle



OE:
1EA505543A

87-26382

TESLA



MODEL	START YEAR	END YEAR
MODEL S (5YJS)	2012/09	

WISHBONE *SALINCAK*

LEFT
UPPER FRONT Axle



OE:
104396500B
600653200B
600653200A



97-25740E



RIGHT
UPPER FRONT Axle



OE:
104396600B
600893000B
600893000A

97-25741E

RELATED	PART NUM	DESCRIPTION
	22950	SILENTBLOCK
	26559E	BALL JOINT

RELATED	PART NUM	DESCRIPTION
	22950	SILENTBLOCK
	26559E	BALL JOINT

VW			
MODEL	START YEAR	END YEAR	
ID.3 (E11)	2019/11		
ID.4 (E21)	2020/05		



SILENTBLOCK *TAKOZ*

LEFT & RIGHT
LOWER REAR Axle



OE:
1EA505543A

87-26382